

HERMANN SCHMIDT®

PRECISION WORKHOLDING



2019

HOW TO WORK WITH HERMANN SCHMIDT

Visit **HSCHMIDT.COM**

- Find in-depth product details and resources.
- View large library of configuration examples.
- Order products online:
 - Pay by credit card.
 - Terms customers can also order online.
 - Most products and accessories are in stock and ship the same or next business day.

Contact Us Directly

Online: **hschmidt.com/contact**

Email us: **hsc@hschmidt.com**

Call us: **860-289-3347**

TABLE OF CONTENTS

Magnetic Sine Plates	4
Magnetic Chucks.....	4-7
Electro-Permanent Magnetic Chucks.....	8
Magnetic Face Tooling.....	9
Stainless Steel Rotary Index Fixture	10-11
3 & 6 Jaw Chucks.....	12-13
Precision Vises.....	14-15
Surface Gage	15
Palletizing Reference Systems	16
Custom Solutions	17
Other Tools.....	18
Parts, Accessories and Repairs	19



Made in USA



Precision Workholding

Since 1962, the name Hermann Schmidt has been synonymous with superior precision workholding solutions. We are proud to continue that tradition in 2019 and beyond.

We remain focused on magnetic, high-precision mechanical and palletized workholding solutions. Please contact us if you have any questions or manufacturing challenges.

A handwritten signature in black ink, appearing to read 'Thomas Duff III'.

Thomas D. Duff III, President

THE HERMANN SCHMIDT DIFFERENCE

Great Return on Your Investment

- Fast, flexible and repeatable setup for efficient production.
- Superior results avoid costly reruns and returns.
- Treated properly, Hermann Schmidt tools can last a lifetime.

In Stock and Ready To Ship

- Our standard precision is often their custom order.
- Avoid waiting weeks for tools that still do not meet our quality.

Patented Innovation Made in the USA

- Our tools have always been built in Connecticut.

Configuration Designs and Sourcing

- We recommend and develop the best workholding solutions.

Custom Solutions

- Contact us when custom workholding is required. We design and produce solutions for the most demanding customers.

Repair and Refurbishment

- We repair and recondition our products to original specs.

FINE POLE MAGNETIC SINE PLATES

- Flat, parallel and square within .0002"
- Completely sealed
- Angles 0° to 45° within .0002"
- Mahogany case included



MODEL	LENGTH	WIDTH	HEIGHT	WEIGHT	PRICE
PM4x4FPH	4"	4"	2 3/4"	11 LBS.	\$2350
CENTER DISTANCE OF ROLLS: 3" ± .0001"					
PM6x6FPH	6"	6"	3 1/8"	24 LBS.	\$3025
CENTER DISTANCE OF ROLLS: 5" ± .0001"					
PM6x12FPH	6"	12"	3 5/16"	49 LBS.	\$4100
CENTER DISTANCE OF ROLLS: 5" ± .0001"					

Compound sine plates available on website

APPLICATIONS: **GRINDING** **SINKER EDM** **INSPECTION**

ROUND MAGNETIC CHUCK

- Completely sealed
- 3/8" tapped hole and T-nut for mounting



MODEL	DIAMETER	THICKNESS	WEIGHT	PRICE
R4	4"	1 7/16"	4 LBS.	\$875
				MAHOGANY CASE \$100

APPLICATIONS: **GRINDING** **PALLETIZING** **SINKER EDM**

MAGNETIC SQUARING BLOCKS

- Flat, parallel and square within .0001"
- Completely sealed



Fine Pole

MODEL	LENGTH	WIDTH	HEIGHT	WEIGHT	PRICE
MSB4x4FPH	4"	1 1/2"	4"	6 LBS.	\$1125
					MAHOGANY CASE \$100

APPLICATIONS: **GRINDING** **PALLETIZING** **SINKER EDM** **INSPECTION**



Standard Pole

MODEL	LENGTH	WIDTH	HEIGHT	WEIGHT	PRICE
MSB6x6	6"	2 13/16"	6"	21 LBS.	\$1475
					MAHOGANY CASE \$135

APPLICATIONS: **GRINDING**

FINE POLE MAGNETIC CHUCKS

- Low magnetic flux



MODEL	LENGTH	WIDTH	HEIGHT	WEIGHT	TOLERANCE	PRICE
MCS4x4FPH	4"	4"	1 1/2"	8 LBS.	.0001"	\$1340
MCS6x6FPH	6"	6"	1 3/4"	21 LBS.	.0001"	\$2085
MCS6x12FPH	6"	12"	1 13/16"	38 LBS.	.0002"	\$2625
MCS8x8FPH	8"	8"	1 5/8"	32 LBS.	.0002"	\$3600
MCS12x12FPH	12"	12"	1 13/16"	74 LBS.	.0002"	\$4675

APPLICATIONS: GRINDING PALLETIZING SINKER EDM INSPECTION

MAGNETIC CHUCKS FOR HARD MILLING

- Highest strength
- No chip contamination



MODEL	LENGTH	WIDTH	HEIGHT	WEIGHT	TOLERANCE	PRICE
MCS6x6HSM	6"	6"	1 5/8"	21 LBS.	.0001"	\$2650
MCS6x12HSM	6"	12"	1 11/16"	38 LBS.	.0002"	\$3265
MCS12x12HSM	12"	12"	1 11/16"	75 LBS.	.0002"	\$6125

APPLICATIONS: GRINDING 4 & 5 AXIS PALLETIZING HARD MILLING

MAGNETIC BLOCKING GRIPS

- Improves the holding characteristics of your workpiece



MODEL	LENGTH	WIDTH	HEIGHT	PRICE
MBGS	2 1/2"	1 1/4"	1/8"	\$135

APPLICATIONS: GRINDING SINKER EDM HARD MILLING

STAINLESS STEEL MAGNETIC CHUCKS

- Flat, parallel and square within .0001"
- Completely sealed

PATENTED



MODEL	LENGTH	WIDTH	HEIGHT	WEIGHT	PRICE
EMS	5 1/2"	4"	1 1/8"	6 LBS.	\$1085

APPLICATIONS: **PALLETIZING** WIRE EDM



- Designed for larger workpiece
- Can be rotated for tall workpiece

MODEL	LENGTH	WIDTH	HEIGHT	WEIGHT	PRICE
EML	5 1/8"	2 1/2"	2 1/2"	9 LBS.	\$1625

APPLICATIONS: **PALLETIZING** WIRE EDM

CORE MAGNET

- Powerful rare earth magnet
- Prevents cut off from dropping



MODEL	DIAMETER	HEIGHT	PRICE
WCM	1 3/16"	1/2"	\$35

APPLICATIONS: **WIRE EDM**

ELECTRO-PERMANENT MAGNETIC CHUCKS

- Highest holding power
- Single operation accuracy
- 5-sided access
- Fail-safe controls

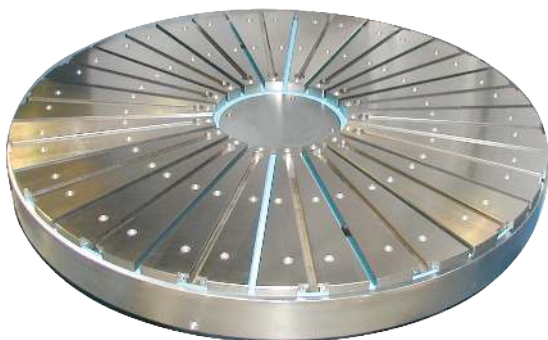
CONVENTIONAL MILLING



- Standard sizes 12" x 12", 12" x 17", 17" x 17", 17" x 23"
- Standard designs to 40" x 60"
- Custom solutions to 8' x 30'

APPLICATIONS: GRINDING 4 & 5 AXIS PALLETIZING HARD MILLING
CONVENTIONAL MILLING

HARD TURNING & ROTARY GRINDING



- Radial pole magnet
- Ideal for ID/OD work
- Optimal for rings
- Standard designs 10" to 80"

APPLICATIONS: GRINDING HARD TURNING

WENmagnetics

MAGNETIC FACE TOOLING ACCESSORIES

- Enhances performance of magnetic systems

SELF-SHIMMING POLE EXTENSIONS

- Deformation-free grip and support



RIGHT-ANGLE SQUARE

- Turns magnetic force 90°



SIDE GRIPPING

- Creates magnetic side-pull for lateral holding



FRICTION COATINGS

- Doubles the slide resistance



HARD TURNING DRIVERS

- Allows for full machining access



SHOE CENTERLESS

- Carbide inserts for durability



STAINLESS STEEL ROTARY INDEX FIXTURE



- Set precise angles within 15 arc seconds
- Fully submersible
- Up to 45 adjustable indexing positions
 - Ceramic bearings
 - Flat, parallel and square within .0001"
 - Readout in decimal or degrees, minutes, seconds

MODEL	LENGTH	WIDTH	HEIGHT	PRICE
RIF-S	6"	5"	5 3/4"	\$9950

THRU HOLE CAPACITY: 1"

INCLUDES: 8 ANGLE STOPS, WORKPIECE STOP, AND MAHOGANY CASE

APPLICATIONS: **GRINDING** **INDEXING** **PALLETIZING** **WIRE EDM** **SINKER EDM**
INSPECTION

DRIVE OPTIONS

EXTERNAL MOTOR

Reversing, O Ring Drive, 0-400 RPM



EXM-400 \$825

INTERNAL MOTOR

Fully Submersible, Reversing,
Direct Drive, 5-1800 RPM



INM-1800 \$9695

- 6 arc seconds accuracy

TOOLING OPTIONS

EDM GROUND SYSTEM

Ensures continuity



EGS-F \$385

LEVELING HEAD

Eliminates fixture shimming



LH-RIF \$1275

V-BLOCK

Capacity 1 1/2", stainless steel



VB \$1150

5C COLLET CHUCK

Dead length, stainless steel



BTW-5C \$1240

ROUND MAGNETIC CHUCK

See page 4.



STAINLESS STEEL CHUCKS

See page 12.



REFERENCING SYSTEMS

See page 16.

system 3R

EROWA®



HIRSCHMANN

STAINLESS STEEL PRECISION CHUCKS

- Repeats within .0001" as part diameters vary
- Work support to face of fixture
- Relief for headed work

PATENTED



*Jaw Relief Detail
on Website*

THREE JAW

MODEL	CAPACITY	DIAMETER	THICKNESS	WEIGHT	PRICE
BTDM	.008" TO .375"	2"	1"	1 LBS.	\$3445
BTDR	.020" TO 1"	4"	1 1/4"	4 LBS.	\$3600
BTDR12	1" TO 2"	5"	1 3/4"	7 LBS.	\$4100

SIX JAW

MODEL	CAPACITY	DIAMETER	THICKNESS	WEIGHT	PRICE
BTDR23	2" TO 3"	6 5/8"	1 3/4"	14 LBS.	\$6995
BTDR34	3" TO 4"	7 13/16"	1 3/4"	19 LBS.	\$13250

NOT A STOCK ITEM.

APPLICATIONS: **GRINDING** **4 & 5 AXIS** **PALLETIZING** **WIRE EDM** **SINKER EDM**
HARDMILLING **INSPECTION**

- Ideal for bushing I.D.'s

PATENTED



THREE JAW

MODEL	CAPACITY	LENGTH	WIDTH	THICKNESS	WEIGHT	PRICE
BTDSQ	.020" TO 1"	4"	4"	1 1/4"	5 LBS.	\$3825
BTDSQ12	1" TO 2"	5"	5"	1 3/4"	9 LBS.	\$4350

SIX JAW

MODEL	CAPACITY	LENGTH	WIDTH	THICKNESS	WEIGHT	PRICE
BTDSQ23	2" TO 3"	6 5/8"	6 5/8"	1 3/4"	16 LBS.	\$6995
BTDSQ34	3" TO 4"	7 13/16"	7 13/16"	1 3/4"	22 LBS.	\$13250

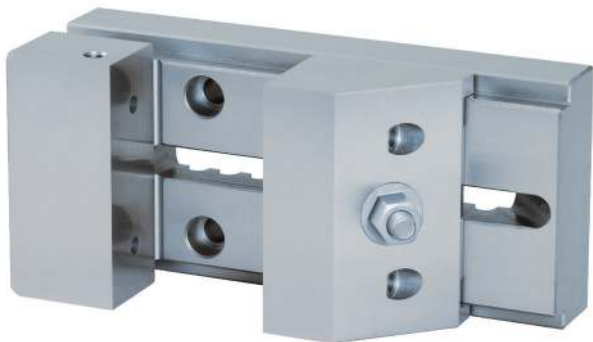
NOT A STOCK ITEM.

APPLICATIONS: **GRINDING** **PALLETIZING** **WIRE EDM** **SINKER EDM** **HARD MILLING**
INSPECTION

- Hardened jaws and body
- Replaceable contact pins
- Includes torque limiting wrench
- Square chucks include set-up bushings for wire EDM

STAINLESS STEEL PRECISION VISES

- Flat, parallel and square within .0002"
- Material: 440C
- Hardness: 58 RC
- Deep frozen for stability



MODEL	JAW OPENING	LENGTH	WIDTH	HEIGHT	WEIGHT	JAW DEPTH	PRICE
V0-1 1/2S	1 1/2"	2 7/8"	1 1/4"	1 1/2"	1 LB.	5/8"	\$630 MAHOGANY CASE \$50
V0-4S	4"	6 1/2"	2 3/8"	3"	7 1/2 LBS.	1 1/4"	\$1740 MAHOGANY CASE \$110

APPLICATIONS: **GRINDING** **PALLETIZING** **WIRE EDM** **HARD MILLING** **SINKER EDM**
INSPECTION



Stationary jaw can be placed in 12 locations.

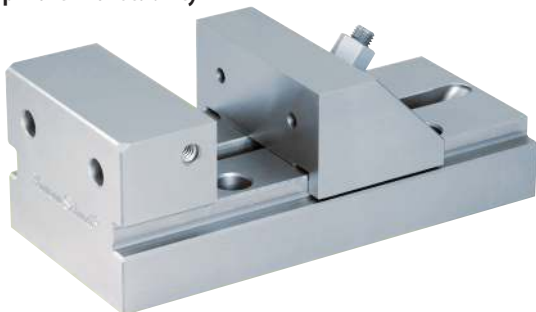
MODEL	JAW OPENING	LENGTH	WIDTH	HEIGHT	WEIGHT	JAW DEPTH	PRICE
GJVS7	7"	11 1/8"	3 3/4"	1"	9 LBS.	1"	\$2245
GJVS-MJ	SEE WEBSITE						\$460

Extra moveable jaw to hold two workpieces up to 2 5/16" each.

APPLICATIONS: **GRINDING** **WIRE EDM** **SINKER EDM** **INSPECTION**

PRECISION VISES

- Flat, parallel and square within .0002"
- Hardness: 60-62 RC
- Deep frozen for stability



MODEL	JAW OPENING	LENGTH	WIDTH	HEIGHT	WEIGHT	JAW DEPTH	PRICE
V0-1 1/2A	1 1/2"	2 7/8"	1 1/2"	1 1/4"	1 LB.	5/8"	\$570
							MAHOGANY CASE \$50
V0-4	4"	6 1/2"	3"	2 3/8"	7 1/2 LBS.	1 1/4"	\$920
							MAHOGANY CASE \$110

APPLICATIONS: **GRINDING** **PALLETIZING** **SINKER EDM** **HARD MILLING** **INSPECTION**

SURFACE GAGE



- Hardened fine pitch screw with large adjustment knob for precise control
- Base is hardened and lapped for smooth vibration-free operation

MODEL	LENGTH	WIDTH	HEIGHT	WEIGHT	CAPACITY	PRICE
MG-1	3 1/2"	2 1/2"	1 3/8"	4 LBS.	12"	\$350
EXT ROD	EXTENDED ROD				16 1/2"	\$85

APPLICATIONS: **INSPECTION**

PALLETIZING/REFERENCING SYSTEMS



Our product accuracy and reliability integrate with major referencing systems for reduced set-up time and increased productivity. We offer:

- Mounting services
- Dealers services to source and configure
- Custom integration services



CUSTOM SOLUTIONS

Production tools can be configured to meet requirements considered only possible with custom-designed tools



SUB-MICRON PRECISION

Accuracy and repeatability better than 0.00050" available



LEVELING FIXTURES

Eliminates fixture shimming through simple adjustments



SUBPLATES

Quick, accurate mounting on various machining tools



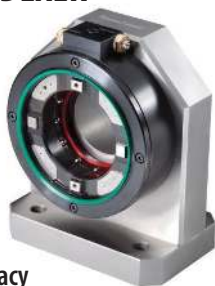
PHOTO LIBRARY OF CUSTOM SOLUTIONS

To view many more configuration examples, go to:

www.hscheidt.com/photos

EXTREME PRECISION 90° INDEXER

- Total indexing error less than 2 arc seconds
- Square and parallel less than 0.0001" over 8"
- Automation ready
- System can be used in rotary applications that require extreme accuracy



STAINLESS STEEL SCROLL CHUCKS

ID/OD holding through a large range



DOVETAIL FIXTURES

Simple, rigid, accessible workholding for 4 and 5 axis machining



ADDITIVE MANUFACTURING

In process and post process solutions



- Angle plate with referencing system



- Custom build plates with referencing system



- Leveling

PARTS AND ACCESSORIES

Maintenance parts and accessories for Hermann Schmidt tools



REPAIR AND REFURBISHMENT

We repair and recondition Hermann Schmidt products to original specifications. We will inspect your tool to determine the work needed, offer alternatives and confirm charges before any work.

For more information, prices and shipping info, visit:

www.hscheidt.com/repairs



26 Sea Pave Road
South Windsor, CT 06074

Phone: 860-289-3347
www.hscheidt.com

PHOTO LIBRARY OF CUSTOM SOLUTIONS
www.hscheidt.com/photos

MEET US AT:
EASTEC
WEST SPRINGFIELD, MA
MAY 14 - 16, 2019

MADE IN USA